

PRICING POLICY-PLEASE READ CAREFULLY

Prices in this catalog are effective at time of publication. Current product pricing is available on our web site and industry specific search tools that provide supplier certified pricing and these prices will prevail.

STATEMENT OF LIMITED LIABILITY

Magnet, LLC™, Innovations® by Magnet™, Benchmark® Crystal and Clocks, and The Bag Factory® are collectively known as The Magnet Group (TMG). TMG obligations with respect to orders placed and/or products delivered to buyer shall be limited to replacement or repair of defective products which are returned to the appropriate TMG division, postage pre-paid, within thirty (30) days from the date of shipping or, at TMG's option, to a refund of the amount of the purchase price paid for products returned to TMG within thirty (30) days from the date of shipping, without any further obligation or liability on the part of TMG. Buyer's sole remedies for liability of any kind with respect to products ordered or furnished by TMG and any other performance by TMG or with respect to buyer's use thereof, shall be limited to the replacement or repair or refund aforementioned and in no event shall TMG be liable or responsible for incidental, special or consequential damages allegedly caused by a failure to timely deliver products, non-delivery of products or a delivery of defective or non-conforming products. No claim of any kind by buyer, whether as to products delivered, non-delivery of products or other faulty performance by TMG shall exceed the amount of the purchase price received by TMG for the products, and a failure to provide TMG with notice of any claim within thirty (30) days from the date of shipping and failure to return such products within said time shall constitute a waiver of all such claims in respect to such products.

Additionally, please note all products and photos with trademarks or logos used in this catalog are to show art and imprint reproduction capability only. They do not imply an endorsement by holders of such trademarks or designs. They are not meant to be advertisements, nor are these items for sale to anyone other than parties expressly authorized by the owner of such trademarks and logo designs. Each and every buyer represents and warrants that all artwork, product design, text, and other content ("Content") provided to TMG in connection with any order for products or services, does not violate or infringe the intellectual property rights of any third party. Buyer will, at its sole cost and expense, indemnify, defend and hold harmless TMG and its shareholders, subsidiaries and affiliates (each a "Magnet Indemnified party or TMG Indemnified party") from and against any claims, liabilities, suits and /or proceedings (each a "Claim") made or brought by any third party against any Magnet Indemnified party, including, without limitation, reasonable attorney's fees, costs, judgments, awards, settlement amounts and expenses with respect thereto, to the extent that such Claim is based on a claim, suit and/or proceeding that the Content or the use thereof by a Magnet Indemnified Party in fulfilling an order for products or services to Buyer violates or infringes a patent, copyright, trademark or other intellectual property or proprietary right.

*CALIFORNIA PROPOSITION 65 WARNING

Proposition 65 is a California law that has been in effect since 1986 to promote clean drinking water and keep toxic substances that cause cancer and birth defects out of consumer products. Proposition 65's formal title is "The Safe Drinking Water and Toxic Enforcement Act of 1986." It is administered by Cal/EPA's Office of Environmental Health Hazard Assessment (OEHHA).

The law requires that anyone at reasonable risk of exposure be informed when substances classified as toxins are present. Since enactment, it has been the reason for the addition of notices of specific contents to consumer product labels. Along with the added label requirements, an official list of implicated substances is maintained and made publicly available. To date there are over 700 chemicals listed, and entries are added or removed based on current scientific information. All substances listed show their known or suspected risk factors, a unique CAS chemical classification number, the date they were listed, and if so, whether they have been delisted.

The Magnet Group is committed to complying with all aspects of Prop 65. For further information please feel free to contact TMG at 1-800-458-9457.

ORDER INFORMATION

- All orders are subject to acceptance by Innovations®.
- No verbal orders accepted.
- All orders written without pricing will be processed with Innovations® current pricing.
- All prices in this catalog are subject to change without notice.

E-mailed Orders

E-mailed orders should be sent to orders@themagnetgroup.com. Do not submit artwork with your order. Art can be sent to art@themagnetgroup.com, referencing your purchase order number.

Faxed Orders

Faxed orders are considered originals and will be processed as such. Due to rough transmissions, faxed orders or changes to orders may be difficult to read.

Innovations® is not responsible for any copy misinterpreted when received by fax. Providing confirmation of this information by e-mail to Customer Service is recommended to prevent interpretation of copy error.

Less Than Minimum Quantity

\$50 (G)

Co-op Program

Please call factory for price information. All co-ops must be factory authorized to insure proper billing. Co-ops must be established and verified before first order is submitted. Purchase order must indicate co-op program and co-op quote number when submitted. If not, standard catalog charge will apply. Coupons or discounts cannot be applied to co-op orders. Co-ops not to exceed maximum catalog quantities.

QUICK SHIP® GUIDELINES



- **Quick Ship must be designated very clearly on your faxed or emailed purchase order.**
- Print ready art and a complete purchase order must be received no later than 1:00 PM CST to the Quick Ship fax number: 636-680-6999 or quickship@themagnetgroup.com <<http://www.quickship@themagnetgroup.com/>>.
- For specific art requirements, please see the Artwork section of this catalog.
- For your purchase order to be complete it must include the following:
 - Item number
 - Color
 - Quantity
 - Imprint instructions
 - Shipping information
- Catalog quantities only - subject to inventory availability. Exceptions: Pages 6-18, maximum 2500 pieces. Pages 20-30, maximum 250 pieces. Pages 38-39, maximum 500 pieces. Pages 46-49, maximum 1000 pieces. For metal key chains, Quick Ship is only available for laser decoration, not for pad printed items.
- One standard imprint on one standard location qualifies for Quick Ship.
- Your purchase order must include an after-hours contact person for any questions that may arise.
- Every effort will be made to clear up questions so your order qualifies for Quick Ship. If the designated contact is unavailable, or unable to answer the question, your order will be delayed by a minimum of one working day.
- Closeout items do not qualify for Quick Ship. If an online proof is requested on your order it will add one working day, plus approval time, to your order.
- There is no additional charge for Quick Ship orders; however, your in-hands-date might require expedited shipping. Please contact Customer Service, prior to submitting your purchase order, if you require an expedited shipping quote.
- Multiple drop shipments and special packaging will add time to your order, please call for details.
- Weekends and observed holidays are not counted as production days.
- Customer's account must be current and in good credit standing.

ART REQUIREMENTS

Please submit original art files to: art@themagnetgroup.com. If revised art is sent, it is the customer's responsibility to advise Customer Service of the new art. *Changes to previously sent art must be sent to Customer Service to ensure use of new art. Art resubmission charge of \$10.00 (x) will apply.*

We accept electronic artwork on CD, DVD and e-mail (file size permitting). We have an FTP site available, please call for log-in details. Include a hard copy or PDF of artwork with Innovations orders.

- Be sure to send all linked files, including all TIFF and EPS files for artwork placed in your document even if previously embedded, as well as all printer and screen fonts used.
- Send only original, native vector files.

We support the following software for Macintosh:

- Adobe Illustrator
- Adobe Photoshop
- Adobe Acrobat
- QuarkXPress
- Adobe InDesign

Acceptable File Types:

- Vector (preferred)
- TIFF (minimum 300 dpi resolution)
- EPS (minimum 300 dpi resolution)
- JPEG (minimum 300 dpi resolution)
- PDF (Press Quality)
- ZIP (compression file)
- Stuffit (compression file)

Microsoft electronic files generally are not acceptable as output for print production. However, black-and-white files can be output from a high-quality laser printer and then used as camera-ready artwork.

Camera-Ready Artwork

Camera-ready art is artwork that can be scanned without further preparation or changes. Halftones (screens) will not photograph well and should be avoided. We will accept camera-ready artwork that is already separated or that includes black line work (or key lines) to separate each color. "Camera-ready" art should be clean, black, and crisp on a smooth white background that requires little or no touch-up. (Original art or PMT's are best.) Artwork must be submitted 1/4 of the finished printed size (for large prints) or large enough to fit on 8.5" x 11" page size. Please avoid submitting artwork that must be enlarged more than 400%. If appropriate quality or size specifications are not met, an art charge will apply. This will be determined once artwork is received.

The Following Artwork is Not Camera-Ready:

Drawings, letterhead, photocopies, business cards, faxes, and low resolution laser printed artwork that is not 1200 dpi are not considered camera ready artwork. (Recommendation: Black and white 1200 dpi laser prints at 200% larger than actual size to be imprinted).

Hard Copies

Hard copies are not required on every order; however on the hard copies we receive Innovations® will review but will not proof against electronic art sent. Innovations® offers several types of proofs that can be done if needed (additional charges may apply).

Art Charges

If art requirements are not met, art time will be billed at **\$40.00 (X) per hour**. Factory WILL NOT be responsible for charges due to "clean-up" or "rework" deemed necessary to meet production standards.

Typesetting

We will typeset up to 3 lines for FREE. All other typesetting (including copy changes) will be billed as needed **\$40.00 (X) per hour**. The typeset must be indicated, or it will be left to the discretion of the typesetter. Charges less than \$40.00 will be processed without notification.

Type Size

- 6 point for pad printing and 7 point for laser imprinting.
- Small registers/trademarks with fine lines may appear as a dot on product.

Serif Fonts

- Please avoid using fine serif fonts. These fonts are usually too thin and fill in or lose detail in the printing process.

Line Thickness

- Minimum line thickness: .5 point.
- 1 point minimum line thickness for reverse copy or art.

Additional Art Requirements

- **Pad Print**
 - Butt register not recommended. Please call for assistance.
 - **Trapping:** 1 point minimum. If art is too fine we will overprint. Trapping may cause a color change where colors meet.

Helpful Hints

- EPS (Encapsulated PostScript) file format is used to transfer PostScript image information from one program to another. The file includes PostScript code plus a low-resolution representation of the image. Logos, illustrations and graphics that will be color separated should be saved as EPS files.
- TIFF (Tag Image File Format) is a widely used file format for exchanging bitmapped images (usually scans) between applications. Black and white line art or grayscale images should be saved as TIFF files.
- All grayscale artwork must be saved at the size of the finished document at a minimum of 300 dpi—black and white line art at a minimum of 1200 dpi.
- Please submit TIFF files as a layered document, in case last minute modifications are required.
- Always provide a list of fonts used within a document. This allows output technicians to download the appropriate fonts to their image setter or output device. Remember to list all fonts used with imported illustrations, or the output device may substitute a different font.
- When supplying PostScript fonts with a job, be sure to supply the printer fonts (also called outline fonts) and screen fonts (bitmap fonts). Both must be available for proper output.
- When supplying fonts, be sure to supply those used in the creation of EPS files. (They will not show up in your page makeup application on the list of fonts used.)
- We do not accept TrueType or PC based fonts. Convert to outlines.
- Specify fonts and their style (bold or italic, for example) by using the long menus in your publishing program rather than selecting bold or italic by clicking on a style bar. The menu selection will give you a more accurate representation of the font and style desired. On the Mac platform, clicking on the style bar allows you to select styles for which fonts don't actually exist.
- Limit the number of fonts used in each job.
- Avoid using fine serif fonts. These fonts are usually too thin and fill in or lose detail in the printing process.
- Avoid saving EPS files within EPS files. Avoid transparencies and Illustrator filters to create shadows; they convert to low resolution files.



We support the **sm@rt** program to improve artwork readiness. We accept artwork prepared by these standards. Please visit the website www.smart-artwork.com for more information.

ARTWORK STORAGE

Artwork will remain on file for 1 year. You must resubmit art after that time.

COPY CHANGES

See individual items.

INK COLOR CHANGES

\$25 (G) to change the color of ink being printed using the exact same artwork on the exact same item. (For example, if someone wishes to the same logo in green on 250 pieces and red on the other 250 pieces of the same 500 piece, 1 color imprint order, they would be charged \$50 (G) set up charge and a \$25 (G) ink color change charge in addition to the normal 500 piece unit price.) PMS color match charges and additional color running charges, if applicable, will apply.

PROOFS

Online proofs are no charge. E-mail or fax proofs requested to be sent outside of our online system will incur a \$10.00 (X) charge.

Product Proofs

First Column Pricing plus appropriate set up charge for that production method.

CANCELLATIONS OR CHANGES TO ORDERS

There will be a **minimum \$40.00 (X)** charge if an order is cancelled. Customer will be required to pay for all work completed at the time of the cancellation or change. Our goal is to provide the fastest service possible. Due to the speed of our order fulfillment, charges for changes or cancellations apply once the order is received. Changes may delay production and shipping.

Cancelled orders may be subject to a **minimum \$25.00 (X) restocking fee.**

ART RESUBMISSION CHARGE

When new artwork is submitted a **\$10.00 (X)** charge will be applied.

** Changes to previously sent art must be sent to Customer Service to ensure use of new art.*

STOCK IMPRINT COLORS

| | | |
|------------------------|----------------------------|----------------------------|
| White | Orange PMS 165 | Medium Blue Reflex Blue |
| Black Pantone Black | Yellow Pantone Yellow | Dark Blue/Navy PMS 281 |
| Gray PMS 430 | Green PMS 347 | Purple PMS 266 |
| Brown PMS 469 | Dark Green PMS 349 | Pink PMS 230 |
| Burgundy PMS 202 | Teal PMS 320 | Gold Metallic PMS871 |
| Red PMS 485 | Light Blue Process Blue | Silver Metallic PMS877 |

With NO PMS Color Match/Mix Charge

Please note **"STOCK colors"** on your P.O. to avoid a PMS color match/mix charge. If a non-stock color or PMS number is listed, the requested color will be used and a PMS charge will apply. PMS/Color matches are not guaranteed due to materials printed on. We will use the ink color requested and match as close as possible.

Because the colors below are printed in four-color process, they are not exact representations of the colors used.

PMS AND 4-COLOR PROCESS COLOR MATCHES (Non-Stock Colors)

\$18.75 (G) per color. If a non-stock color or PMS number is listed on P.O., the requested color will be used and a PMS charge will apply. **Color matches are not guaranteed due to variations in inks and raw materials. Lamination may also slightly alter color(s).** We will use the ink color requested and match as close as possible. For PMS color matches we recommend that a product proof be produced to ensure colors are correct. (Metallic and fluorescent colors are not available with digitally printed four-color process imprint.)

To insure repeat orders match the previous color, material specs, etc., please include a sample of the previous item with the new order. **Due to variations in inks, materials, and press runs, an exact match to previous orders is not always possible.**

MAXIMUM IMPRINT COLORS

In most cases, a maximum of 2 colors per imprint location is suggested. For additional requested imprint colors, please contact Customer Service.

STANDARD PRODUCTION TIME

5-7 business days is the preferred production time for most items at catalog quantities. Some items may take additional time based on specifications of individual orders. Contact Customer Service for a detailed production schedule based on specific needs.

RUSH SERVICE

For orders requiring less than minimum standard production time, a rush charge may apply depending on production capacity. Contact the factory for production time confirmation and applicable charges.

OVERRUNS/UNDERRUNS

Every effort will be made to ship the exact quantity ordered. The Magnet Group guarantees no short orders. However, we do reserve the right, in accordance with industry standards, to ship a maximum of 2% over the quantity ordered. The actual quantity shipped will be noted on your invoices and is the quantity that will be billed.

PACKAGING

Items packaged bulk or as specified on individual item pages. Packaging is subject to change as necessary.

SHIPPING & HANDLING

All shipments are F.O.B. Factory. Unless shipping methods or instructions are specified, we reserve the right to ship by the most beneficial means of transportation. Standard handling charges per box apply to all shipments, including 3rd party freight arrangements. Complete shipping instructions must accompany each order. Orders will be shipped directly to distributor if "Ship To Address" is NOT provided upon completion of order.

Due to variances in freight lines and charges, all freight estimates are estimates only. Innovations® is not responsible for final shipping charges.

Master Cartons: Dimensional weight will be applied to master cartons when shipping any method.

Freight Carriers: Freight carriers charge us for address changes caused by incorrect information on purchase orders. Any fees we incur will be invoiced to distributor after we are notified.

Collect, Residential, and Third Party Billing: Any charges refused by or unable to bill to account supplied will be invoiced to the distributor.

Drop Shipments: Billed at \$8.50 (G). Drop shipments include the following: different address same day, same address different dates (due within 30 days), or same address different methods.

Split Shipments: Billed at \$8.50 (G) on different dates due within 30 days.

Palletizing Fee: Billed at \$12.50 (G) per pallet.

C.O.D. Charge: Contact factory.

Foreign Shipments: Call factory for information and charges. All prices based on U.S. dollars and do not include tariffs, duties or brokerage fees.

International Shipment Destination Charges: \$25.00 (G) per shipment, per location.

Additional Charges: Additional charges billed to Innovations® by carriers due to changes in original shipping agreement will be invoiced to the distributor. This includes, incorrect address charges, inside delivery charges or re-consigned freight due to no fault of Innovations®.

PAYMENT TERMS

Net 30 days. All invoices not paid within terms will be assessed a late payment charge of 1 1/2% per month.

RETURNS

All returns must be authorized and accompanied by an RMA#. Any returned items must be packaged to prevent damage in shipment. Items damaged due to poor packaging on return shipment may not be credited. All returned merchandise will be inspected prior to any credit being issued. If no defect is found, merchandise will be returned to the customer at their expense.

Blank goods can be returned within 72 hours of delivery date. Please contact Customer Service for return authorization number. Returns will incur a \$25.00 restocking fee plus all freight charges. Returns received without a prior return authorization will be denied.

REMOVABLE ADHESIVE

Recommended Surfaces:

- Wood doors and desks
- Stainless steel
- Plastic and vinyl
- Computers
- Glass windows and mirrors



DO NOT PLACE ON PAINTED WALL OR WALLPAPERED SURFACES.
NOT RECOMMENDED FOR OUTDOOR USE.

BLANKS

- NEXT DAY shipping on orders of 1,000 pieces or LESS.
- 2nd DAY shipping on orders of 1,001 pieces or MORE.
- Blank goods can be returned within 72 hours of delivery date. Please contact Customer Service for return authorization number. Returns will incur a \$25.00 restocking fee plus all freight charges. Returns received without a prior return authorization will be denied.

SAMPLES

- We prefer all samples orders to be submitted in writing via fax or email.
- Sample requests received before 2:00 p.m. Central Time will ship SAME DAY.
- Sample Charges:
 - *Spec Samples (non-returnable) – First Column Pricing plus appropriate set up charge
 - *Random Samples – billed at End Column Pricing plus freight. Third party freight accounts are preferred for shipping.
 - *Blank Samples – billed at First Column Pricing plus freight. Third party freight accounts are preferred for shipping.
 - *Sample invoices totaling LESS THAN \$10.00 are FREE if shipping number is supplied.

LASERING ON METAL OR WOOD

- **Set Up:** \$50 (G).
- **Repeat Orders:** \$25 (G) for EXACT repeat orders.
- **Running Charge:** 1st location/image/color included in price.
- **Second Location/Image:** \$1.25 (G) per location and image plus set up charge. Please note that each additional location must be smaller than or equal to the listed imprint area. For example, if the imprint area is 1" x 2", a second image area of 1" x 4" would be considered larger and require a special quote.
- **Copy Changes or Personalizations:** \$7.00 (G) for up to 4 lines. Available only on lasered items. For pad printed or screened items, copy changes require a full set up charge

**All prices in this catalog are subject to change without notice.*

COLORFILL OPTION

Colorfill is not available on all items. See individual items for eligibility or contact Customer Service.

Cost

- **Gold of Silver Metallic:** \$4.00 (G) per color, per piece.

Available Colors

Because the colors printed below are printed in four color process, they are not exact representations of the colors shown.

Certain curved surfaces restrict colorfill options on specific items. Please contact Customer Service for details.



FOUR COLOR PROCESS

- Items listed in this catalog as four color process imprint will be printed using a CMYK build, therefore, they are not eligible for spot colors or PMS matches.
- The MK04 and MK05 are printed four color process on a sticker that is attached to the top of the kit.
- The MR09, MR10, KC22, KC23, and KC24 are printed four color process using a dye sublimation print method.

Due to changes in technology or technique, imprint areas may change without notice, see www.themagnetgroup.com for latest information.

| | | |
|---|---|---|
| 2004 Meld Clock98 | CL38 Person Power Clip16 | K3223 Plane Keylight37 |
| 2045 Silver Star Paperweight99 | CR09 Mini Carabiner46 | K3224 Jumbo Classic Keylight36 & 54 |
| ADP01 AC Adapter92 | CR11 Carabiner with Ring46 | K3225 Car Keylight37 |
| ARC1 Metal Arc100 & 101 | CR11S Carabiner with Strap46 | K3228 Apple Keylight36 |
| ARC2 Metal Arc100 & 101 | CR12 #1 Carabiner49 | K3229 Star Keylight36 |
| BC175 Lisbon Business Card Holder78 | CR13PK Ribbon Carabiner48 | K3303 Snap Light39 |
| BC176 Cairo Business Card Holder80 | CR14 Dogbone Carabiner48 | K3306 3 LED Super Bright Keylight38 |
| BC177 Milan Business Card Holder78 | CR15 Heart Carabiner49 | K3332 Carabiner Keytag Rectangle50 |
| BC178 Luxembourg Business Card Holder78 | CR16 Star Carabiner48 | K3333 Carabiner Keytag Oval50 |
| BC181 Slim Card Holder79 | CR17 Oval Double Carabiner47 | K3340 Mini-Frame Keytag58 |
| BG685 Badge Holder81 | CR18 Circle Carabiner49 | K3401 Oval Metal Keytag57 |
| BG900 Garden Tool Pack69 | CR21CM Camouflage Carabiner46 | K3402 Circle Metal Keytag57 |
| BSTP01 Bio-D Staple Remover & Letter Opener .. 88 | D118 Spin Decision99 | K3403 Rectangle Metal Keytag57 |
| CA07 Project Calculator74 | D7004 Magnetic Floating Pen/Holder96 | K4000 Rectangle Keytag55 |
| CB02 Smiley Computer Brush90 | D7005 Magnetic Floating Pen Post-It Holder .95 | K4001 Heart Keytag55 |
| CB04 Computer Brush90 | D7013 Meld Pen/Pencil Cup98 | K4002 Star Keytag55 |
| CH03 Travel Phone Stand91 | D7014 Meld Business Card Holder98 | K4007 Whistle Keytag56 |
| CK04 Hover Clock91 | D7017 Helicopter Pen97 | K4008 House Keytag53 |
| CL02 Solid White Power Clip9 | D7020 Vienna Business Card Holder80 | K4009 Dogbone Keytag53 |
| CL02BK Solid Black Power Clip9 | D7021 Monte Carlo Business Card Holder81 | KC05 Keychain Tape Measure76 |
| CL02CL Translucent Jade Ice Power Clip6 | D7770 Hybrid Pen95 | KC06 Pill Key Chain118 |
| CL02CM Camouflage Power Clip11 | DT01 Dot Magnet17 | KC08 Foot Bottle Opener Key Chain47 |
| CL02CP Champagne Power Clip9 | EC01 Fuel Conservation Set122 | KC09 Bass Bottle Opener Key Chain47 |
| CL02CST Custom Power Clip 11 | F101 Tempo Frame111 | KC10 Aluminum Bottle Opener Key Chain45 |
| CL02GY Grey Power Clip9 | F104 Retrato Frame107 | KC11 Smooth Bottle Opener Key Chain45 |
| CL02LTB Translucent Light Blue Power Clip6 | F106 Dual Position Frame111 | KC12SV Silver Key Separator51 |
| CL02TC Translucent Clear Power Clip6 | F702 Madera Frame with Clock110 | KC13 Standard Bottle Opener Key Chain44 |
| CL02SM Translucent Smoke Power Clip7 | F966 Silver Frame with Clock109 | KC14 The Twist Bottle Opener Key Chain44 |
| CL02SP Silver Pearl Power Clip9 | F973 Wave Frame106 | KC16GD Gold Keyholder54 |
| CL02TB Translucent Blue Power Clip7 | F975 Four Point Frame106 | KC16SV Silver Keyholder54 |
| CL02TDG Translucent Dark Green Power Clip7 | F983 Large Silver Double Frame108 | KC17 Executive Luggage Tag125 |
| CL02TG Translucent Green Power Clip6 | F984 Silver Double Frame108 | KC20 The Express Luggage Tag124 |
| CL02TMR Translucent Maroon Power Clip7 | F985 Silver Double Frame with Clock109 | KC21 Oval Luggage Tag125 |
| CL02TO Translucent Orange Power Clip6 | F991 Aluminum Frame107 | KC22 Full Color Key Ring - Oval59 |
| CL02TP Translucent Purple Power Clip7 | FB01 Brush114 | KC23 Full Color Key Ring - Rectangle59 |
| CL02TPK Translucent Pink Power Clip6 | FNT01 Cascading Waterfall102 | KC24 Full Color Key Ring - Square59 |
| CL02TR Translucent Red Power Clip7 | FNT02 Picture Frame Waterfall103 | KL04 Whistle Keylight41 |
| CL02TY Translucent Yellow Power Clip6 | GF01 Acrylic Frame105 | KL05 House Keylight40 |
| CL02WB Solid White and Blue Power Clip8 | GF02 Acrylic Frame105 | KL08 Screwdriver Keylight43 |
| CL02WG Solid White and Green Power Clip8 | GF05 Swivel Frame104 | KL17 Ribbon Keylight41 |
| CL02WMR Solid White and Maroon Power Clip8 | GFARC1 Arc Acrylic Frame104 | KL18 Car Keylight40 |
| CL02WNY Solid White and Navy Power Clip8 | GFARC2 Arc Acrylic Frame104 | KL19 Airplane Keylight40 |
| CL02WO Solid White and Orange Power Clip8 | HW201 8 Tip Screwdriver72 | KL32 Rectangle Keylight42 |
| CL02WP Solid White and Purple Power Clip8 | HW202 Driver Set71 | KL33 Circle Keylight42 |
| CL02WR Solid White and Red Power Clip8 | HW211 Zip-A-Tin Level70 | KL34 Tool and Keylight Set43 |
| CL09 Stainless Steel Memo Mate17 | HW216 Blue Mini Tool with Pouch73 | KL35 The Torch Keylight38 |
| CL11 Pen Holder Power Clip10 | HW217 The Total Package Tool Set68 | KL36 Carabiner Keylight39 |
| CL16 Jumbo Power Clip12 | HWGLF The Golf Pro73 | L100 Illuminate Flashlight28 |
| CL17 House Power Clip15 | K12BL Cool Blue Silicone Measuring Cups60 | L100CM Camouflage Flashlight28 |
| CL19 Oval Power Clip15 | K15 Cool Silicone Oven Mitt61 | L101 Luminoso-Medium LED Flashlight29 |
| CL20 Heart Power Clip16 | K16 Cool Blue Silicone BBQ Set62 | L102 Luminoso-Large LED Flashlight29 |
| CL21 Star Power Clip14 | K18 Cooks Choice Mini Chopper63 | L105 Photon LED Flashlight27 |
| CL22 Apple Power Clip14 | K19 Cooks Choice Mini Grater63 | L108 The Beam LED Flashlight27 |
| CL23 Ribbon Power Clip18 | K3003 Spinning Oval Keytag52 | L110 Luz Flashlight28 |
| CL25 Giant Power Clip19 | K3014 Silver Round Keytag56 | L114 Safety Light30 |
| CL27 Pill Power Clip16 | K3030 Animation Keytag56 | L115 The Torch Flashlight26 |
| CL31 Business Card Power Clip13 | K3050 Gimble Lock Keytag52 | MC224 Lira Money Clip79 |
| CL34 Circle Power Clip18 | K3053 Pocket Picture Keytag58 | MFL03 Emergency Flashlight34 |
| CL35 Do-It-Yourself Power Clip13 | K3063 Satin Metal Key Separator51 | MFL08 Magnetic Emergency Car Light34 |
| CL36 Square Paper Clip87 | K3084 Bottle Opener Keytag53 | MFL12 Rain or Shine Light32 |
| CL37 Rectangle Paper Clip87 | K3222 House Keylight37 | MFL13 Snow or Shine Light121 |

| | | | | | |
|--------|---|-----|--------|--|-----------|
| MFL14 |The Stubby Flashlight | 20 | TEK105 |AMP It Up! Speakers | 92 |
| MFL15 |LED Clip Light | 29 | TK01 |10 in 1 Screwdriver Set | 74 |
| MFL17 |The Contour Flashlight | 22 | TK09 |Laser Level with Tape Measure | 74 |
| MFL18 |The Palm Flashlight | 22 | TK11 |6 in 1 Screwdriver | 75 |
| MFL19 |Tube Umbrella Flashlight | 33 | TK14 |Grip Tape Measure | 76 |
| MFL20 |The Search Light | 24 | TK16 |Level Tool Kit with Light | 75 |
| MFL21 |Magnetic Flashlight | 23 | TK18 |The Gripper Ice Scraper | 121 |
| MFL22 |28 LED Daylighter Flashlight | 25 | TK19 |Square Tape Measure Key Chain | 77 |
| MFL23 |The Wobble Stubby Flashlight | 21 | TK20 |The Captain's Tool Set | 64 |
| MFL24 |The Barrel Stubby Flashlight | 21 | TK21 |The Marshall's Tool Set | 65 |
| MFL26 |Array Flashlight | 23 | TK22 |25 Piece Trifold Tool Set | 66 |
| MFL27 |Blackjack 21 LED Flashlight | 25 | TK23 |Round Tape Measure | 77 |
| MFL28 |Magnetic Emergency Light | 35 | TK24 |The Hardback 40 Pc Tool Set | 67 |
| MFL29 |The Sabre Umbrella | 31 | TK25 |Illuminating Tool Kit | 72 |
| MFL30 |14 LED Dura-Light | 26 | TK26 |Tire Pressure Gauge | 123 |
| MK01 |Manicure Set | 114 | TRT1 |Magnetic Letter Opener | 88 |
| MK03 |Pedometer | 119 | TRT2 |The Letter Pal | 83 |
| MK04 |Deluxe First Aid Kit | 116 | V802 |Clarity Binocular | 120 |
| MK05 |Standard First Aid Kit | 116 | V805 |Dual Tone Binocular | 120 |
| MK07 |Bandage Dispenser | 118 | V808 |Deluxe Grip Binocular | 120 |
| MK09 |Waterproof First Aid Kit | 117 | WAV1 |Metal Wave | 100 & 101 |
| MK14 |Soft Side First Aid Kit | 117 | | | |
| MK15 |Microfiber Cloth | 85 | | | |
| MK16 |Microfiber Compact | 85 | | | |
| MK17 |Makeup Brush Set | 115 | | | |
| MK18 |Multifunction Pedometer | 119 | | | |
| MK19 |Nail Buddy | 115 | | | |
| MR06 |Compact Mirror | 113 | | | |
| MR08 |Rectangular Compact Mirror | 113 | | | |
| MR09 |Round Metal Compact Mirror | 112 | | | |
| MR10 |Square Metal Compact Mirror | 112 | | | |
| PCD02 |Rockin' Clip Holder | 86 | | | |
| PEN09 |Decision Pen | 94 | | | |
| PM08 |Magnetic Magnifying Ruler Pen | 94 | | | |
| PST4 |Post-It Note Dispenser | 89 | | | |
| PST5 |Clip and Note Box | 83 | | | |
| PST6 |The Bowling Man | 86 | | | |
| S111F |Travel Speakers | 93 | | | |
| SGC01 |Sunglass Visor Clip and Pen Holder | 123 | | | |
| ST051 |Recycled Jotter Pad with Pen | 84 | | | |
| ST052 |Recycled Sticky Flags Pad | 82 | | | |
| ST053 |Recycled Notebook with Pen | 84 | | | |
| ST056 |Jumbo Sticky Note Keeper | 82 | | | |
| STP05 |Stand Up Stapler | 89 | | | |
| TEK104 |Mini MP3 Speakers | 93 | | | |

asi 68507
ppai 330919
upic MAGNET2
sage 52498

A DIVISION OF



Please see all of our 2012 catalogs



asi 68507 ppai 112424
upic MAGNET sage 52498



asi 68507 ppai 330919
upic MAGNET2 sage 52498



asi 68507 ppai 260424
upic BAGFACTRY sage 52498

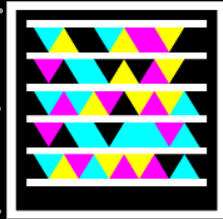


asi 68507 ppai 111438
upic BENCHMRK sage 52498

Scan these codes with your smartphone
for **instant access** to this catalog!



Shoot It!



Microsoft Tag



QR-Code



Shoot It!



www.themagnetgroup.com
www.innovationsbymagnet.com

Proudly Distributed By:

